

Model 400 Single Element UV/Vis/IR Pyroelectric Detector



Manufactured under one or more of the following U.S. patents: 3,839,640 - 4,218,620 - 4,326,663 - 4,384,207 - 4,437,003 - 4,441,023 - 4,523,095

Model 400 consists of a single lithium tantalate sensing element sealed into a TO-5 transistor housing with an optical filter.

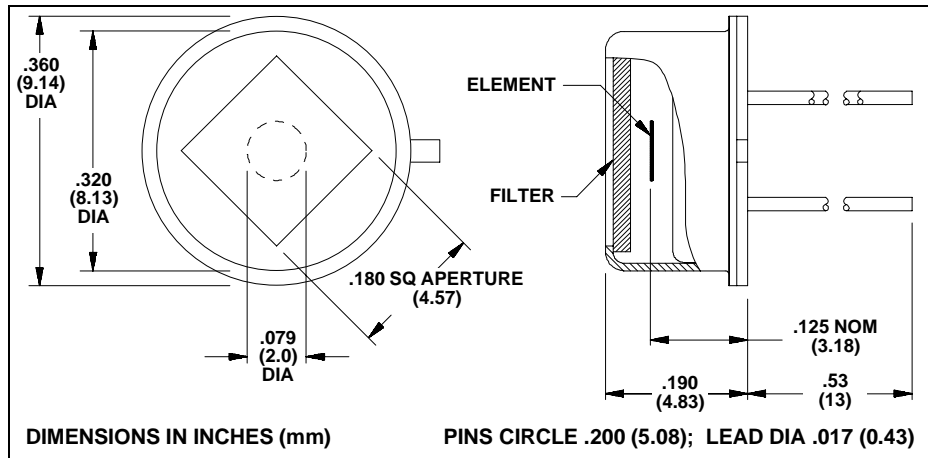
A patented element mounting technique is used to increase low frequency response and reduce effects of microphony.

Model 400 has a spectral response from 0.1 to 1,000 μm wavelength. An optical filter may be used to select spectral response and to protect the sensing element from physical damage, drafts, electrical noise and moisture (degradation of insulation resistance).

The inherent high impedance of the detector requires special consideration be given to matching circuitry. Some basic circuits are shown below.

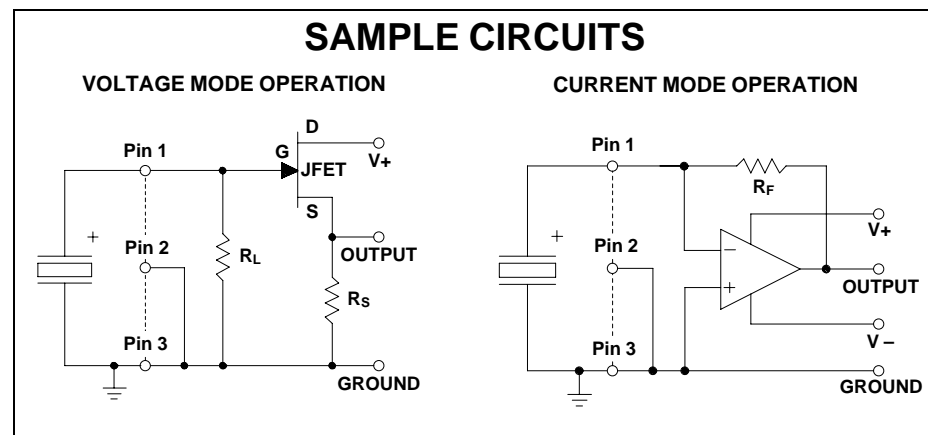
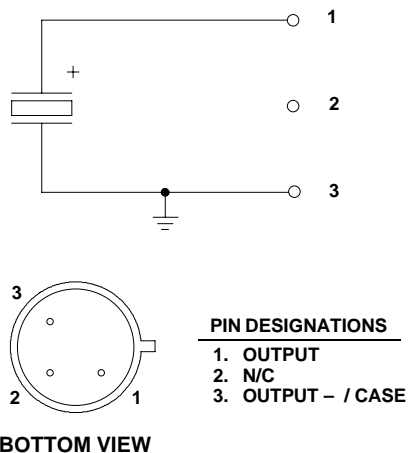
Applications

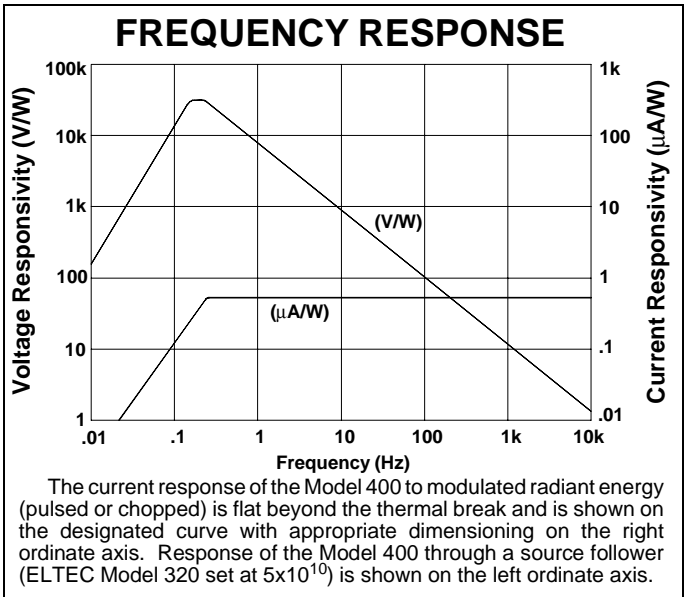
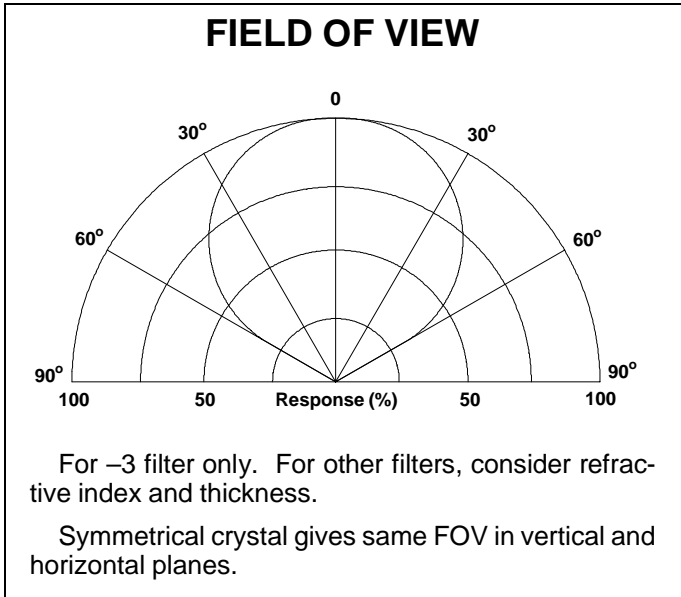
- Pyrometry
- Gas Analysis
- Instrumentation
- Low Power Laser Measurements
- Millimeter Wave Studies



Characteristics	400	Unit	Test Conditions	ELTECdata Reference
Detector Type	Single			
Element Size	2.0	mm, Dia		
Optical Bandwidth	0.1 to 1,000	μm	Various Filters	101
Capacitance (min)	20	pF		
(typ)	30			
(max)	50			
Current Responsivity (typ)	0.75	$\mu\text{A/W}$	Without Filter, 1Hz to 1KHz	
Element Impedance (typ)	$>5 \times 10^{12}$	Ω		
Thermal Breakpoint f_T (typ)	0.25	Hz		102
Incident Power Limit ¹	0.32	W/cm^2		109
Recommended Operating Temperature	-55 to +125	$^{\circ}\text{C}$	Functional	
Storage Temperature	-55 to +125	$^{\circ}\text{C}$	$\Delta T < 50^{\circ}\text{C/min}$	
Output Protection	Short output leads together if ΔT exceeds 50°C/min			

Characteristics at 25 $^{\circ}\text{C}$, with no filter.
Data is established on a sample basis and is believed to be representative.
¹Dependent on pulse width & duty cycle.





For best results, the following precautions and recommendations should be observed. (See ELTECdata #101):

Mounting: Avoid mechanical stresses on case and leads.

Soldering: Detectors must be hand soldered to minimize the chance of destroying the internal components. Avoid machine or hot air soldering. Leave a minimum lead length of .250 inch (6.35mm). When soldering to detector leads, use a heat sink between the case and leads. Beware that the new RoHS compliant solders require a higher soldering temperature making heat sinking the detector extremely important.

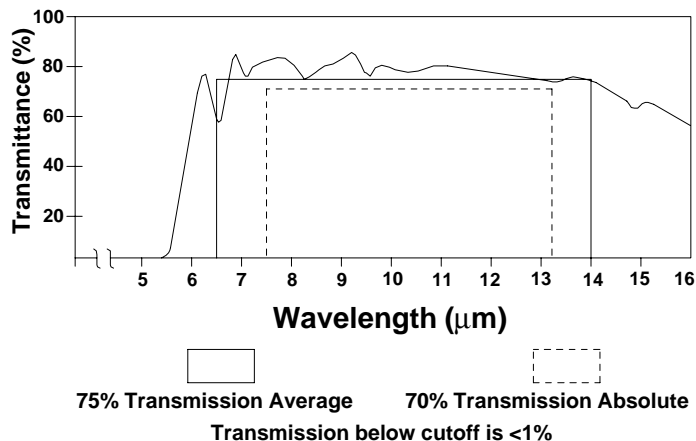
Static Discharge: Protect detectors from electro-static charges.

Thermal Shock: Temperature changes and rate of change must be kept to a minimum ($<50\text{C}^{\circ}/\text{min.}$) to prevent damage.

Optical Filter: This Model can be used with any standard ELTEC detector filter. For more information, please refer to ELTECdata # 101.

Light Leakage: Slight sensitivity to visible light leaking through the glass-to-metal seal on the base may be observed.

Transmission Characteristics of -3 Filter (HP7)



Noise: Noise is limited only by the external amplifier and not by the detector. Amplifiers with impedances over $10^9 \Omega$ are not recommended, other than for experimental purposes, due to susceptibility to electrical noise, EMI and current leakage. Contact ELTEC for help in choosing an appropriate pyroelectric detector with integrated high impedance amplifier.

As a resolution or lower information limit, noise is established not only by the detector. Other noise sources are:

- Radiated and conducted RF signals
- Subsequent amplification or signal conditioning stages
- Power supply noise
- Components, such as high value resistors and capacitors (tantalum and aluminum electrolytic)
- Mechanical contacts and weak solder joints
- Shock and vibration excited microphonics
- Outside thermal influences on the detector other than the desired infrared input, i.e. drafts

All of these noise sources should be considered carefully when the information signal is $< 20 \text{ mV}$.

Calculations: When calculating response from the basic formula, (see ELTECdata # 100) use crystal thickness as 0.005 cm (0.002 inch) and use 30 pF capacitance.

Optical Design: Use of a detector with a filter in an optical system may require consideration of the image displacement toward the filter. This displacement (s) caused by the insertion of a planoparallel plate (filter thickness = t; refractive index = N) is given by $s = (t/N)(N-1)$.

NOTICE: The information provided herein is believed to be reliable. However, ELTEC Instruments, Inc. assumes no responsibility for inaccuracies or omissions. Due to industry components being incorporated into ELTEC's devices and ELTEC continually striving for product improvement, specifications may change without notice.



ELTEC Instruments, Inc. P.O. Box 9610 Daytona Beach, Florida 32120-9610 U.S.A.
Tel (USA and Canada): (800) 874-7780 Tel (Outside USA): (386) 252-0411 Fax: (386) 258-3791
Web: www.eltecinstruments.com E-Mail: Sales@eltecinstruments.com